

# MONTHLY MEMBERSHIP PROGRESS REPORT

LOCATION INDIA

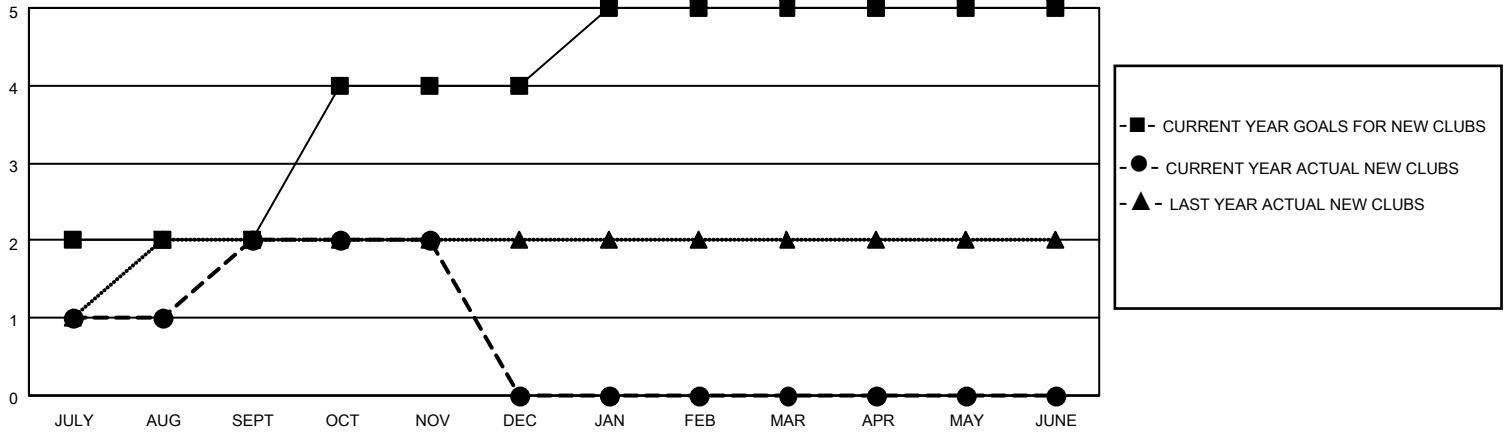
District 322C4

Results as of: 11/30/2021

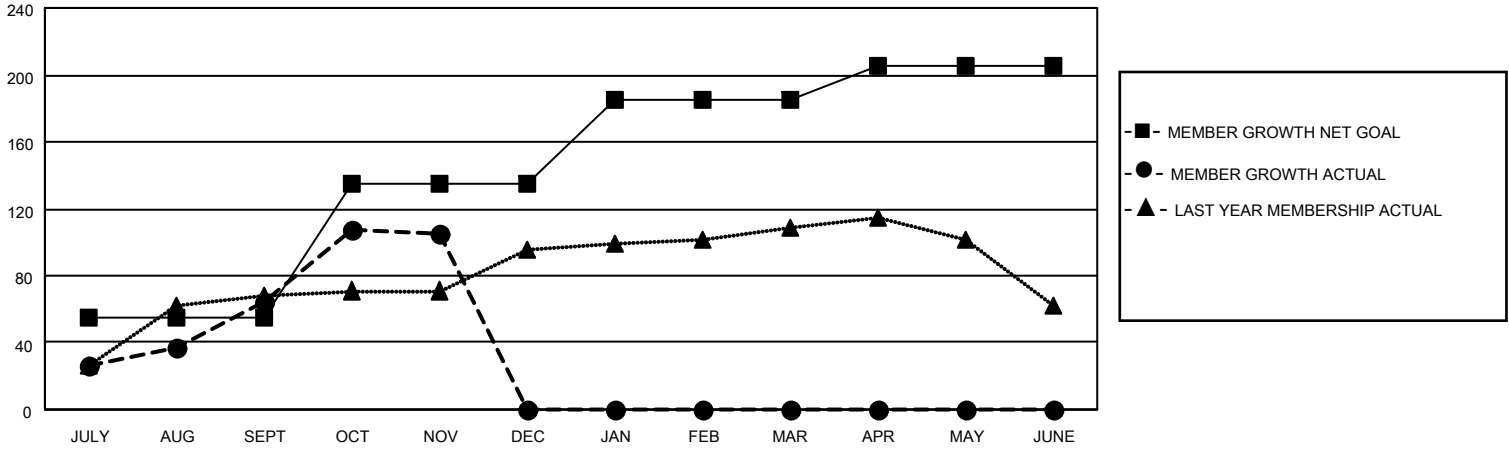
Clubs			
RESULTS FOR 2021-2022			
QUARTER	NEW CLUB GOAL	NEW CLUBS	DROPPED CLUBS
JULY/AUG/SEPT	2	2	0
OCT/NOV/DEC	2	0	0
JAN/FEB/MAR	1	0	0
APR/MAY/JUNE	0	0	0

Members			
RESULTS FOR 2021-2022			
QUARTER	MEMBER GROWTH NET GOAL	MEMBER GROWTH ACTUAL	DROPPED MEMBERS ACTUAL (including transfers)
JULY/AUG/SEPT	55	83	15
OCT/NOV/DEC	80	63	20
JAN/FEB/MAR	50	0	0
APR/MAY/JUNE	20	0	0

**GOALS AND ACTUAL NEW CLUBS CUMULATIVE**



**GOALS AND ACTUAL MEMBERS CUMULATIVE**



DROPPED CLUBS: 0	
<b>DROPPED MEMBERS</b>	
DECEASED	1
CLUB CANCELLED	0
OTHER	34
<b>TOTAL</b>	<b>35</b>

18 CLUBS OF 45 ADDED 1 OR MORE NEW MEMBERS

[CLICK HERE FOR CUMULATIVE MEMBERSHIP DATA](#)

<u>GENDER DISTRIBUTION</u>	
MALE	900 (64.84%)
FEMALE	488 (35.16%)
NON BINARY	0 (0.00%)
PREFER NOT TO ANSWER	0 (0.00%)
<b>TOTAL FAMILY UNIT MEMBERS</b>	<b>776</b>
<b>FAMILY MEMBERS PAYING HALF DUES</b>	<b>456</b>